
scoretility

Lou King

Jul 20, 2023

CONTENTS:

- 1 Scoring Module** **3**
- 1.1 Guides 3
- 1.1.1 Scoring Admin Guide 3
- 1.1.1.1 Introduction 3
- 1.1.1.2 License 3
- 1.1.1.3 Use Cases 3
- 1.1.1.4 Results Management Flow 5
- 1.1.1.5 Detailed Operations 5
- 1.2 Reference 10
- 1.2.1 Scoring Admin Reference 10
- 1.2.1.1 Club Affiliations view 10
- 1.2.1.2 Divisions view 11
- 1.2.1.3 Download Results view 12
- 1.2.1.4 Edit Participants view 13
- 1.2.1.5 Exclusions view 15
- 1.2.1.6 Members view 16
- 1.2.1.7 Races view 17
- 1.2.1.8 Results Analysis Summary view 19
- 1.2.1.9 Series view 19
- 1.2.2 scoretility User Reference 23
- 1.2.2.1 Series Race Results view 23
- 1.2.2.2 Standings view 23
- 1.2.3 Scoring File Formats 24
- 1.2.3.1 Common 24
- 1.2.3.2 Members File Format 25
- 1.2.3.3 Races File Format 26
- 1.2.3.4 Results File Format 26
- 1.2.3.5 Time Format 27
- 2 Super Admin Module** **29**
- 2.1 Guides 29
- 2.1.1 Super Admin Guide 29
- 2.1.1.1 Use Cases 29
- 2.2 Reference 29
- 2.2.1 Super Admin Reference 29
- 2.2.1.1 Age Grade Tables view 29
- 2.2.1.2 Clubs view 30
- 2.2.1.3 Service Credentials view 31
- 2.2.1.4 Users view 32

3	Glossary	35
4	Typographical Conventions	37
4.1	Product Reference	37
4.2	Buttons	37
4.3	Fields	37
4.4	Filters	37
4.5	Navigation	38
4.6	Section Management	38
4.6.1	Lower Level Section	38
4.6.1.1	Even Lower Level Section	38
5	Indices and tables	39
	Index	41

scoretivity provides all a club needs to score their race results and series standings

scoretivity gives a club the ability to define various race series, which races are in each series, and to collect and tabulate results for races run. When results are tabulated, standings are made available showing the current scores for all the athletes included in that series.

SCORING MODULE

1.1 Guides

1.1.1 Scoring Admin Guide

1.1.1.1 Introduction

This guide describes the concepts of the **scoretility** Scoring Module, and gives guidance on how to achieve the work flow.

This document describes how to administer **scoretility**, a race results database. **scoretility** gives a club the ability to define various race series, which races are in each series, and to collect and tabulate results for races run. When results are tabulated, standings are made available showing the current scores for all the athletes included in that series. For more information, see <https://scoretility.com/features>.

In order to follow these instructions, you must be a *scoring admin* for **scoretility**. If you need admin privileges for **scoretility**, contact the FSRC Chief Technology Dude at technology@steeplechasers.org to be added.

1.1.1.2 License

See <https://github.com/louking/rrwebapp/blob/master/README.md#license> for details on **scoretility** licensing.

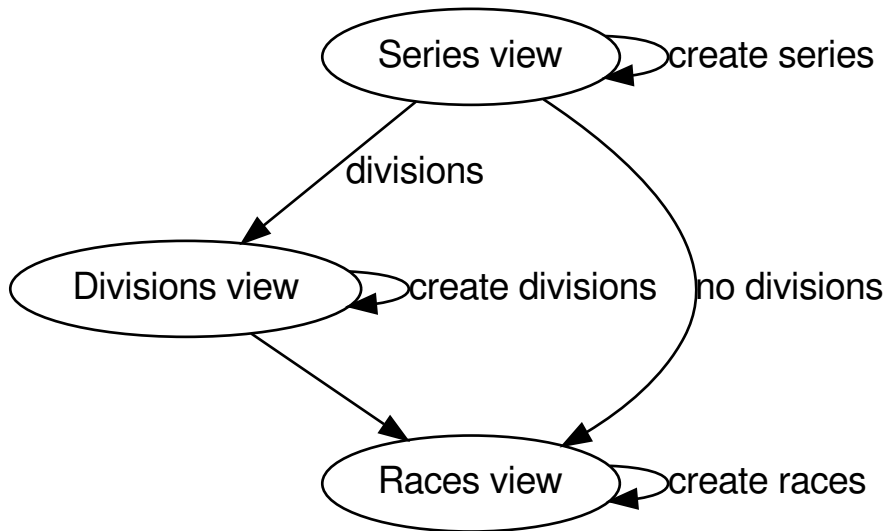
1.1.1.3 Use Cases

General

- To do any administration for scoretility results, you need to be logged in. See *Log In*.
- For best security, the first time you log in, you should change your password. See *Change Password*.
- Make sure correct club and year are set in header

Beginning of Year Setup

- Create series, most likely *Copy Series from Previous Year*
- Create divisions, most likely *Copy Divisions from Previous Year*
- Create each race
 - A few things to note:
 - * You'll probably have to ask around for specific dates of races. If you don't know the date for a race, add "(date TBD)" to the race name
 - * Make sure you have the exact specific number of miles listed for each race. This is for age grade calculations and needs to be very precise.



FSRC Racing Team Management

- At the scoretility Home page, in the upper right corner, set the date to the current year and the club name to the FSRC Racing Team
- If a racing team member has run a race which is not already in scoretility's database, the race must be added. See *Add Races*.
 - When updating the "series" the race is in
 - * Always click All Races
 - * If this race is not on the racing team schedule click Other Races
- Once a race is in the scoretility database, results may be added. Often an individual result would be added, e.g., from the FSRC Racing Team Information Submission Form (Responses) sheet. See *Add Individual Result*.

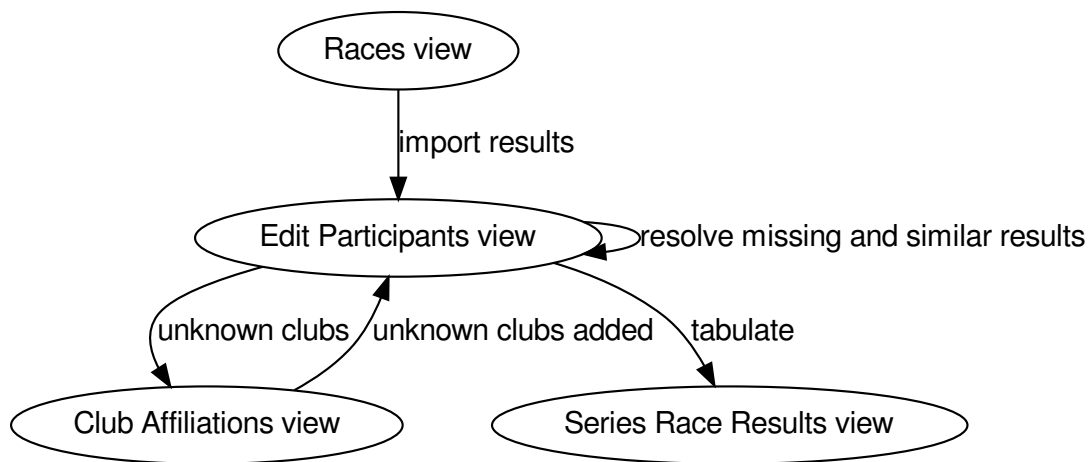
- Sometimes there are many racing team members who have run a race. In this case it might be easier to import the results file to include all their results. See [Add Results from File](#).

Maryland/DC Grand Prix Management

- At the scoretility Home page, in the upper right corner, set the date to the current year and the club name to the Maryland/DC Grand Prix
- Add results from the [Races view](#)
- Follow instructions in [Edit Participants view](#):
 - resolve *missed*, *closeage*, and *similar* results
 - confirm all results (these should all be green)
 - tabulate
- when tabulating, resolve any unknown clubs using [Club Affiliations view](#)

1.1.1.4 Results Management Flow

This section shows the basic flow for importing and tabulating the results for a race.



1.1.1.5 Detailed Operations

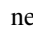
Log In

Follow these instructions to log in to scoretility.

- Go to the scoretility home page at scoretility.com
- Click the log in link in the upper right
- Enter email address and password

Change Password

The internet is a dangerous place, and there are constantly people trying to break into the steeplechasers web site and scoretility. **Please pick a secure password, with capitals, lower case, numbers and special characters, at least 8 characters.**

- Click on  near the log out link
- Enter new Password
- Click **Update**

Add Series

Races must be part of a series to be tabulated. Generally it's better to add the series before adding the race. Follow these instructions to add a series.

Copy Series from Previous Year

If the series for this club have been set up in a prior year, follow these instructions to copy all the series from the previous year. Do this first before adding a new series for the year.

- Make sure year and club are set correctly in the scoretility header
- Click Scoring > Series in navigation menu
- Click **Copy From Year**, Select club and year to copy from, then click **Copy Series**

Add Series from Scratch

If the series for this club have never been set up, follow these instructions to add each series.

- Make sure year and club are set correctly in the scoretility header
- Click Scoring > Series in navigation menu
- Click **New** near the top of the table
- Give the series a name and apply parameters
 - Click **Create**

Note: because of some processing later, it is very important that the name is distinct from other series, i.e., the words in one series name cannot be found in another series name

- See *Series view* for detailed description of the *series* attributes

Add Divisions

Series optionally use divisions as part of the tabulation process.

Copy Divisions from Previous Year

If the divisions for this club have been set up in a prior year, follow these instructions to copy all the divisions from a previous year. Do this first before adding new divisions for the series.

- Make sure year and club are set correctly in the scoretility header
- Make sure series have been set up as in [Add Series](#)
- Click Scoring > Divisions in navigation menu
- Click **Copy From Year**, Select club and year to copy from, then click **Copy Divisions**

Add Divisions from Scratch

If the divisions for this club have never been set up, follow these instructions to add divisions for each series.

- Make sure year and club are set correctly in the scoretility header
- Make sure series have been set up as in [Add Series](#)
- Click Scoring > Divisions in navigation menu
- Click **New** near the top of the table
- Repeat for each age range
 - Choose a series
 - Set age range for this division
 - Click **Create**

Add Races

Copy Races from Previous Year

Follow these instructions to copy races from a previous year.

- Download the previous year's races; Create file with this year's races
 - Set the scoretility header to the club and year you want to copy from
 - Click Scoring > Races in the navigation menu to access the [Races view](#)
 - Click the **CSV** button and save the previous year's races on your workstation
 - Open the saved csv file in Excel

Important: Format the *Date* column as yyyy-mm-dd

- Rename the *Date* column to *Old Date*
- Insert a new column with heading *date* (note lower case)

- In the first empty cell under the new *date* heading, add the formula =C2+52*7
 - * C2 is the first cell under the *Old Date* heading
 - * +52*7 adds 52 weeks to the old date (this is just an estimate and should be changed later if needed)
- Copy the formula to all the cells in the *date* column
 - * If the dates are known, these can be changed now, or these can be changed after the import below
- Change Race Name heading to *race*
- Insert a new column before *race* with heading *year*
- Enter the new year in the first cell under Year, and copy to all the cells in the *year* column
- Rename the heading Miles to *distance*
- Make sure the following headings are lower case (*year, race, date, distance, surface*)
- Save the file as .csv (you might want to give it a new name)
- Import this year's races
 - Set the scoretility header to the new year you want to copy to
 - Click Scoring > Races in the navigation menu to access the *Races view* if you're not already there
 - Click **Tools**
 - Choose the file you saved in the previous step
 - Click **Import**
 - Update race dates as appropriate
 - Add each race to the appropriate series
 - * This may be easiest to do using the *Series view*

Add Races from Scratch

Follow these instructions to add a race.

- Make sure year and club are set correctly in the scoretility header
- Click Scoring > Races in the navigation menu to access the *Races view*
- Click **New** near the top of the table
- Enter the race name, date, surface and distance. For most accurate age grading, use the following distances for non-integral mile races. (Chief Technology Dude admits to being anal about this)
 - 5K - 3.10686 miles
 - 10K - 6.21371 miles
 - Half marathon - 13.1094 miles
 - Marathon - 26.2188 miles
- Select each *series* the race will be in
- Click **Create**

Edit Results

The main point of scoretility is to add results to the database and to update series standings through tabulation of these results. Results can be added from a file when all the results for a race are added at once, or individually, in cases when only a few results need to be added.

Add Results from File

Follow these instructions to add results from a race results file. Import files must follow the format defined at [Results File Format](#).

- Make sure year and club are set correctly in the scoretility header
- Click Races in navigation menu
- In the Results column, there will be a button with **import** or ✓
 - Click **import** or ✓
 - Click Choose File then navigate to the file to be imported
 - Click **Open**
 - Click **Import**
- If there are already results in the race, you will be asked Overwrite results?
 - This is normally ok because the results from the file are the “official” results
 - Click **Overwrite**

Note: any results previously entered into the race will be overwritten

- You will be put into the Edit Participants view. See [Edit Participants view](#) for details on how to manage the results and tabulate for the standings.

Add Individual Result

Follow these instructions to add an individual result. Note if you import results from a file later, this individual result will be lost.

- Make sure year and club are set correctly in the scoretility header
- Click Races in navigation menu
- In the Results column, it will either say **import** or ✓
 - Click **import** or ✓, then click **Edit Participants** to get to [Edit Participants view](#)
- In the table header, near the left, click **New**
 - In **Result Name** start typing the name of the member and select, or just select from the pulldown
 - **Age** and **Gender** should automatically be filled in
- Type in the **Time**. See [Time Format](#) for the format.
- No need to fill in **Hometown**
- No need to fill in **Club** unless club is required for the series

- Click **Create**
- Near top of *Edit Participants view* next to **Match** filter click **Tools**
- Under Tabulate Results, click **Tabulate** (this step updates the standings)

Gender Management

The *Members view* maintains each member's gender. When race results are tabulated using *Edit Participants view*, the result's gender will follow that which is configured in *Members view*.

Should a member change their gender, previously tabulated race results are unaffected, but future races will be tabulated with the new gender. If this happens in the middle of the year, any affected races during that year should be retabulated using *Races view* to navigate to *Edit Participants view* (click ✓, then **Edit Participants**), and then **Tools** > **Tabulate** to regenerate the race results with the latest gender stored in *Members view*.

1.2 Reference

1.2.1 Scoring Admin Reference

This page gives a reference to all **scoretility** views which are available to *users* who have the *scoring admin security role*.

1.2.1.1 Club Affiliations view

Navigation: Scoring > Club Affiliations

For *series* which have **Display Club Affiliation** set on the *Series view*, the club affiliation must match one of the **Alternate Names** defined in this view. Note the **Display Name** and **Official Name** are automatically added to the **Alternate Names** list.

Display Name short name for the club which is displayed on the relevant views

Official Name official name for the club which shows up when the mouse hovers over the **Display Name**

Alternate Names names which, when in the *results*, map to this club. To add a new alternate name, simply type the name or paste the text, then hit carriage return

The **Copy from Year** button may be used to copy club affiliations from a previous year or another club.

Show entries Search:

Previous 1 2 Next

Display Name	Official Name	Alternate Names
	no club	<input type="button" value="no club"/>
AS	Annapolis Striders	<input type="button" value="Annapolis Striders"/> <input type="button" value="Annapolis Striders Inc."/> <input type="button" value="AS"/>
BRRC	Baltimore Road Runners Club	<input type="button" value="Baltimore Road Runners Club"/> <input type="button" value="BRRC"/>
DCRRC	DC Road Runner's Club	<input type="button" value="DC Road Runner's Club"/> <input type="button" value="DCRRC"/>
FRR	Falls Road Running	<input type="button" value="Falls Road Running"/> <input type="button" value="FRR"/>
FSRC	Frederick Steeplechasers Running Club	<input type="button" value="Frederick Steeplechasers Running Club"/> <input type="button" value="FSRC"/>
HCRC	Harford County Running Club	<input type="button" value="Harford County Running Club"/> <input type="button" value="Harford Running"/> <input type="button" value="HCRC"/>
HCS	Howard County Striders	<input type="button" value="Howard County Striders"/> <input type="button" value="HCS"/>
KIRG	Kent Island Running Group	<input type="button" value="Kent Island Running Group"/> <input type="button" value="KIRG"/>
MCRRC	Montgomery County Road Runners Club	<input type="button" value="Montgomery County Road Runners Club"/> <input type="button" value="MCRRC"/>

Showing 1 to 10 of 11 entries

Edit entry ✕

Display Name

Official Name

Alternate Names

1.2.1.2 Divisions view

Navigation: Scoring > Divisions

For each *series* which has **Divisions** set to *yes*, there should be divisions set up on this view.

Series select the *series* for which this *division* is to apply to

Low Age low age for this division

High Age high age for this division

Note: The *series* need to be set up before this view is used.

The **Copy from Year** button may be used to copy divisions from a previous year or another club.

Show entries 1

Search:

Series	Low Age	High Age
grandprix	0	13
grandprix	14	29
grandprix	30	39
grandprix	40	49
grandprix	50	59
grandprix	60	69
grandprix	70	99

Showing 1 to 7 of 7 entries

Edit entry ✕

Series

Low Age

High Age

1.2.1.3 Download Results view

Navigation: Scoring > Download Results

This view can be used to scrape results from a web page. The services which are supported are identified at the top of the view.

For RunSignUp, one or more result sets can be combined into a single downloaded csv file. The file header may need to be edited to be suitable for import using the *Races view* import function.

Enter URL of results page. Currently supports

- RunSignUp

Results URL

When the URL is entered, additional fields are shown. The fields shown may depend on the service which holds the result data (e.g., RunSignUp).

Enter URL of results page. Currently supports

- RunSignUp

Results URL

Year

Distance

Result Set

1.2.1.4 Edit Participants view

Navigation: Scoring > Races > [next to race] **Import** or ✓ > **Choose File / Import**

Navigation: Scoring > Races > [next to race] **Import** or ✓ > Edit Participants

The import process finds members within the results, using a fuzzy logic to match names, e.g., member name John Doe for Result Name Jack Doe. The Match column indicates whether a match was found, and how close the match was

- *definite* - name and age match exactly
- *similar* - age matched, but name didn't match exactly
- *closeage* - age was close, but not exact
- *missed* - nonmember series, runner not found in database

You should visit each entry that is *similar*, *closeage*, or *missed*

Note: for races in series which allow nonmembers to run, the edit participants view may show a lot of *missed* results. Updating each of these individually as described below may be time-consuming. For this reason there is a way to take all of these by bulk.

- In the header, *Show All entries*. In the footer **verify all the entries are being shown before proceeding**
 - only entries which are “shown” will be updated in the next step, so this step is very important
- Click **Tools**, then under **Select Names and Confirm** click **Confirm**
- A progress bar will display. Before doing any other operations, be sure to wait until the progress bar disappears. This can take a while - please be patient.
- Once this is complete, continue as below for *similar* and *closeage* entries

By clicking in the **Match:** filter, you can limit your view to *similar*, *closeage*, and/or *missed*

- For results with Match of *similar*, *closeage*, or *missed* there will be a pull-down under Standings Name. Here you can decide if the Result Name really is for one of the member options
- Alternately, if you think you know the member you can click in the on the left, then click **Edit** to modify the result. This only works for members of the club for which the date of birth is known or estimated

- In Result Name: start typing the name of the member and select, or just select from the pulldown
- Age: and Gender: should automatically be filled in

Note: if you have filtered using Match, after editing you may need to reload page and apply your Match filter again. This is a bug (#209) and will hopefully be fixed in a future release

- **Be sure to check the box under Confirm when you are satisfied the Standings Name is correct or “[not included]”**

In order for results to be included in *series* standings, they must be tabulated. Near top of Edit Participants next to **Match:** field click **Tools** . Under Tabulate Results, click **Tabulate** (this step updates the standings)

Match:

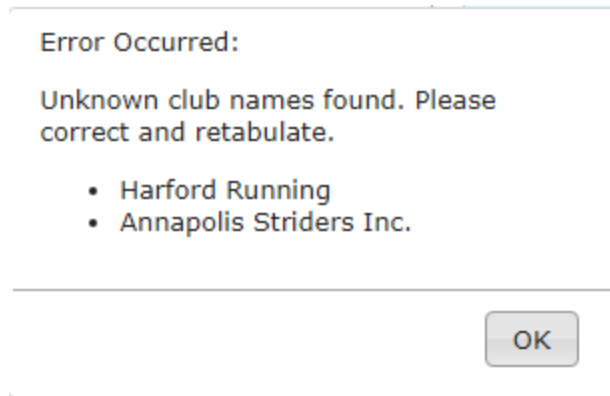
Summer Decathlon 2 Mie - 2021-06-09
Series: decathlon - nonmembers included

Show entries Search:

	Place	Result Name	Gender	Age	Match	Type	Confirm	Standings Name	Hometown	Club	Time
<input type="checkbox"/>	1	Arthur Leathers	M	30	definite	member	<input checked="" type="checkbox"/>	Arthur Leathers (30)			10:33
<input type="checkbox"/>	2	Scott Wallace	M	41	definite	member	<input checked="" type="checkbox"/>	Scott Wallace (41)			10:43
<input type="checkbox"/>	3	Pete Wergin	M	55	definite	member	<input checked="" type="checkbox"/>	Pete Wergin (55)			11:41
<input type="checkbox"/>	4	John Way	M	56	definite	member	<input checked="" type="checkbox"/>	John Way (56)			13:53
<input type="checkbox"/>	5	Sean Allen	M	41	definite	member	<input checked="" type="checkbox"/>	Sean Allen (41)			14:28
<input type="checkbox"/>	6	Rick Kern	M	55	definite	member	<input checked="" type="checkbox"/>	Rick Kern (55)			14:33
<input type="checkbox"/>	7	Ron Elliot	M	45	similar	member	<input checked="" type="checkbox"/>	Ron Elliott (45)			15:44
<input type="checkbox"/>	8	Tim O'Keefe	M	68	definite	member	<input checked="" type="checkbox"/>	Tim O'Keefe (68)			15:53
<input type="checkbox"/>	9	Kathy Cea	F	61	definite	member	<input checked="" type="checkbox"/>	Kathy Cea (61)			16:14
<input type="checkbox"/>	10	Val Powell	F	31	missed	nonmember	<input type="checkbox"/>	Val Powell			19:19

Showing 1 to 10 of 15 entries

For *series* which have **Display Club Affiliation** set on the *Series view*, the club affiliation must match one of the **Alternate Names** defined in this view. If clubs are detected which are unknown, there will be a popup indicating which clubs were not found. This must be resolved using the *Club Affiliations view*, adding these as **Alternate Names** and retabulating, or by editing the results file and reimporting.



1.2.1.5 Exclusions view

Navigation: Scoring > Exclusions

Exclusions happen when using the *Edit Participants view*, and a name is suggested which is close to a result name, but a different member name is chosen. This prevents the excluded **Member Name** from being offered for **Result Name** in the future

If an exclusion is made by accident, it may be deleted using this view.

Show entries Search:

Result Name ▲	Member Name ▼
Andrew Burnette	Angie Burnette
Ann Sullivan	Lorraine Sullivan
Chris Valentine	Chris VanSant
Diane Johnston	keary johnston
Lisa Johnston	keary johnston
Matthew Bazik	Matthew Rydzik
Matthew Hicks	Matthew Rydzik
Nicole Matthews	Shannon Matthews
Robert Hall	Robert Zaal
ROBERT JOHNSON	keary johnston

Showing 1 to 10 of 12 entries

1.2.1.6 Members view

Navigation: Scoring > Members

For *clubs* that have *members*, this view provides a way to bring the current membership into the database.

If a service is set up (e.g., RunSignUp club service), the *members* list can be downloaded directly from the service. Otherwise, a file needs to be imported into the system. The **Import** button is used to import the *members*.

The view has the following filters:

As Of chooses the active date for which members are shown

As Of

Show entries Search:

Name	First Name	Last Name	Date of Birth	Estimated DOB	Gender	Hometown	Renewal Date	Expiration Date	Member
Adam Lowe	Adam	Lowe		no	M		2019-01-01	2023-12-31	is-member
Andrew Spangenberg	Andrew	Spangenberg		no	M	Frederick, MD	2019-01-01	2023-12-31	is-member
Arthur Gregory	Arthur	Gregory		no	M	Ijamsville, MD	2019-01-01	2023-12-31	is-member
Arthur Leathers	Arthur	Leathers		no	M	Walkersville, MD	2019-01-01	2023-12-31	is-member
Chris VanSant	Chris	VanSant		no	M	Fairfield, PA	2019-01-01	2023-12-31	is-member
Claire Heasman	Claire	Heasman		no	F	Frederick, MD	2019-01-01	2023-12-31	is-member
Connie Pritchard	Connie	Pritchard		no	F	Frederick, MD	2019-01-01	2023-12-31	is-member
Harriet Langlois	Harriet	Langlois		no	F	Ijamsville, MD	2019-01-01	2023-12-31	is-member
Jamie Wisz	Jamie	Wisz		no	F	Hagerstown, MD	2019-01-01	2023-12-31	is-member
Jesse Henderson	Jesse	Henderson		no	M	Germantown, MD	2019-01-01	2023-12-31	is-member

Showing 1 to 10 of 21 entries

Search:

Import Members

Import the member list directly from the configured service

Import the member list as a CSV file. Please read the [Import Guide](#) for information on the column headers and data format.

No file chosen

1.2.1.7 Races view

Navigation: Scoring > Members

This view is used to define the *races*, which must be done before *results* are imported. Each *race* can be entered individually, or a file of *races* can be imported.

Results provides the **import** or ✓ action buttons

Race Name name of the race

Date date of the race

Miles race distance in miles. For accurate age grading, the miles should be set with as much precision as possible, e.g.,

- 5K - 3.10686 miles
- 10K - 6.21371 miles
- 15K - 9.32057 miles
- Half marathon - 13.1094 miles
- Marathon - 26.2188 miles

Surface *road, track, or trail*

Series one or more *series* that this *race* is included in

The view has the following filters:

Series you can filter on *races* which are in one or more *series*

Series

Show entries Search:

Results	Race Name	Date	Miles	Surface	Series
<input checked="" type="checkbox"/>	Forest of Needwood 5 Mile Run - VIRTUAL	2021-03-13	5	road	2021participation
<input type="button" value="import"/>	Frederick Half Marathon	2021-05-02	13.1094	road	grandprix, equalizer, 2021participation
<input checked="" type="checkbox"/>	Summer Decathlon 2 Mie	2021-06-09	2	road	decathlon
<input type="button" value="import"/>	Frederick Summer Solstice 8K	2021-06-19	4.97097	road	grandprix, equalizer, 2021participation
<input type="button" value="import"/>	Summer Decathlon 1500m	2021-06-30	0.932057	track	decathlon
<input type="button" value="import"/>	Independence 5000 DATE TBD	2021-07-03	3.10686	road	grandprix, 2021participation
<input type="button" value="import"/>	Summer Decathlon 800m DATE TBD	2021-07-07	0.497097	track	decathlon
<input type="button" value="import"/>	FSRC Summer Decathlon 800m DATE TBD	2021-07-07	0.497097	track	grandprix, equalizer, 2021participation
<input type="button" value="import"/>	Catoctin 50K Trail Run	2021-07-10	33	trail	grandprix, 2021participation
<input type="button" value="import"/>	Catoctin 25K Trail Run	2021-07-10	16.5	trail	grandprix, 2021participation

Showing 1 to 10 of 21 entries

✕

Race Name	Frederick Half Marathon
Date (yyyy-mm-dd)	2021-05-02
Miles	13.1094
Surface	road ▾
Series	✕ 2021participation ✕ equalizer ✕ grandprix

Update

To import *aces*, click **Tools**, then choose a file for import.

Tools
Search:
Previous
1
Next

▾ Import Races

Import the selected year's race list as a CSV file. Please read the [Import Guide](#) for information on the column headers and data format.

Choose File
No file chosen
Import

To import *results* for a *race*, click the **import** or ✓ button under the **Results** header. If the *results* have already been imported the button is displayed as ✓. Both buttons include navigation to the *Edit Participants view*. The ✓ button has additional navigation to the *Series Race Results view*.

From **import**

Import the selected race's results as a CSV file. Please read the [Import Guide](#) for information on the column headers and data format.

Choose File
No file chosen
Import

Edit Participants

From ✓

Import the selected race's results as a CSV file. Please read the [Import Guide](#) for information on the column headers and data format.

Choose File No file chosen

Import

Edit Participants

View Series Results

1.2.1.8 Results Analysis Summary view

Navigation: Scoring > Results Analysis Summary

To be added

Show entries CSV 1yr agegrade + avg agegrade + trend + numraces + Search:

Previous 1 2 3 4 5 ... 32 Next

name	age	gender	1yr agegrade overall	avg agegrade overall	trend overall	numraces overall
Aidan Callery	34	M	52.0	53.6	-0.5%/yr	11
Alisyn Henry	22	F	57.0	57.2	1.8%/yr	25
Allie Young	69	F	45.0	49.5	-4.1%/yr	15
Alyssa Vance	40	F	51.6	46.2	10.2%/yr	7
Amanda Berry	37	F	44.5	44.1	0.6%/yr	5
Amy Brockey-Rogers	35	F	45.0	43.8	-0.3%/yr	15
Amy Manning	42	F	37.0	37.0	8.0%/yr	3
Amy Weed	49	F	52.4	50.6	11.3%/yr	11
Andrew Quong	53	M	60.5	61.2	-1.0%/yr	10
Amanda Berry	49	F	46.0	46.5	0.3%/yr	10

Showing 1 to 10 of 315 entries

1.2.1.9 Series view

Navigation: Scoring > Series

The Series view is used to describe the calculation for a series of *racess*, in order to generate standings for the *Standings view*.

Max Races this is the max number of races which will count for the final standings result

Multiplier this value is multiplied by the result score. Result score is determined by the remaining fields

Max Gen Points set this if overall result score is determined by place. Points start with this value for the first place, this value minus 1 for second place, etc.

- e.g., if **Max Gen Points** is set to 50, first place result score is 50, second place is 49, etc

Max Div Points for this to work, this series must have Divisions set up. Set this if division result score is determined by place. Points start with this value for the first place, this value minus 1 for second place, etc.

- e.g., if **Max Div Points** is set to 10, first place result score is 10, second place is 19, etc

- generally **Max Div Points** would be set to a lower number than **Max Gen Points**

Max by Num of Rnrs set this to *yes* if the max should be determined by the number of runners who ran a race within a gender. Either set this, or set **Max Gen Points** / **Max Div Points**, but not both

Order By this can be set depending on how you'd like the results ordering to be shown

- *time* to order by absolute time
- *agtime* to order by age graded time
- *agpercent* to order by age graded percent
- *overallplace* to order by overall place

Order this can be set depending on how you'd like the results ordering to be shown, *ascending* or *decending*

Members Only set this to *yes* if the results import should only consider true members of a club

Avg Ties set this to *yes* if ties should be averaged in order to determine result points

Overall set this to *yes* if overall placement is to be calculated. Generally this only applies if **Max Gen Points** is set

Divisions set this to *yes* only if division placement is to be calculated. Generally this only applies if **Max Div Points** is set. Note Divisions must be set using *Divisions view* for this series for this to work properly.

Age Grade set this to *yes* if age grade is to be calculated and used for result scoring. Generally this only applies if **Order By** is set to *agtime* or *agpercent*

Place Min Races minimum number of races to have run to be awarded a place

OA Awards number of overall awards to be emphasized

Div Awards number of division awards to be emphasized

Tiebreaker Options

- *Head to Head Point Differential*
set to break tie by looking at points achieved at races run head to head
- *Compare Average Points*
set to break tie by looking at average points achieved for the top **Max Races** races
- *Division Tie Compare Average Overall Points*
set to break division tie by looking at average overall points achieved for the top **Max Races** races

Other Series Options

- *Proportional Scoring*
check this if proportional scoring is to be used. Proportional scoring means top score gets $1 * \text{Multiplier}$, and other scores get $(\text{top_time} / \text{this_time}) * \text{Multiplier}$
- *Requires Club Affiliation*
if this is checked, there must be a value in the club column which doesn't evaluate to *None* when compared against the *Club Affiliations view* data, otherwise the result doesn't get tabulated

- *Display Club Affiliation*

if this is checked, the club affiliation is displayed in the *Standings view* and *Series Race Results view*

Races *races* can be added to the *series* here or in the *Races view*

The **Copy from Year** button may be used to copy series from a previous year or another club.

Show entries Search:

Series Name	Max Races	Multiplier	Max Gen Pts	Max Div Pts	Max by Num Rtns	Order By	Order	Members Only	Avg Ties	Overall	Divisions	Age Grade	Place Min Races	# OA Awards	# Div Awards	Tiebreaker Options	Other Series Options	Races
decathlon		10			yes	agtime	ascending	no	yes	yes	no	yes	5	10				
equalizer	4	100			no	agpercent	descending	yes	no	yes	no	yes						
grandprix	5	1	50	10	no	overallplace	ascending	yes	no	yes	yes	no	4	5	5	head_to_head_points, average_points, div_compare_overall		

Showing 1 to 3 of 3 entries

✕
Edit entry

Series Name	<input type="text" value="grandprix"/>
Max Races	<input type="text" value="5"/>
Multiplier	<input type="text" value="1"/>
Max Gen Pts	<input type="text" value="50"/>
Max Div Pts	<input type="text" value="10"/>
Max by Num Rnrs	<input type="text" value="no"/>
Order By	<input type="text" value="overallplace"/>
Order	<input type="text" value="ascending"/>
Members Only	<input type="text" value="yes"/>
Avg Ties	<input type="text" value="no"/>
Overall	<input type="text" value="yes"/>
Divisions	<input type="text" value="yes"/>
Age Grade	<input type="text" value="no"/>
Place Min Races	<input type="text" value="4"/>
# OA Awards	<input type="text" value="5"/>
# Div Awards	<input type="text" value="5"/>
Tiebreaker Options	<input checked="" type="checkbox"/> Head to Head Point Differential <input checked="" type="checkbox"/> Compare Average Points <input checked="" type="checkbox"/> Division Tie Compare Average Overall Points
Other Series Options	<input type="checkbox"/> Proportional Scoring <input type="checkbox"/> Requires Club Affiliation <input type="checkbox"/> Display Club Affiliation
Races	<div style="border: 1px solid gray; padding: 5px;"> <input checked="" type="checkbox"/> Bachman Valley Half Marathon <input checked="" type="checkbox"/> Catoclin 50K Trail Run <input checked="" type="checkbox"/> Forest of Needwood 5 Mile Run <input checked="" type="checkbox"/> Frederick Half Marathon <input checked="" type="checkbox"/> Frederick Market Street Mile <input checked="" type="checkbox"/> Frederick Women's Distance Festival 5K <input checked="" type="checkbox"/> FSRC Summer Decathlon 800m <input checked="" type="checkbox"/> Germantown 5 Miler <input checked="" type="checkbox"/> Gettysburg Marathon <input checked="" type="checkbox"/> Goodloe Byron 10 Mile Run <input checked="" type="checkbox"/> Lewis Memorial 10 Mile Run <input checked="" type="checkbox"/> Lil'B 5K-ish <input checked="" type="checkbox"/> Rick O'Donnell 5.22 Mile Trail Run (one loop) <input checked="" type="checkbox"/> RRCA Club Challenge 10 Mile <input checked="" type="checkbox"/> Run for the Pie 10K <input checked="" type="checkbox"/> Spook Hill Cider & Wine 4 Mile Run <input checked="" type="checkbox"/> Stone Mill 50 Mile Run <input checked="" type="checkbox"/> Summer Solstice Twilight 8K <input checked="" type="checkbox"/> Way Station Turkey Trot 5K </div>

1.2.2 scoretility User Reference


This page gives a reference to all **scoretility** views which are available to any users.

1.2.2.1 Series Race Results view

Navigation: Standings > [set club, year, series] > Expand Races > [click race]

(admin only) **Navigation:** Scoring > Races > ✓ (next to race)

This view displays the tabulated results of the *race*. Note that the results are filtered as defined within the *series* definition. E.g., for series with **Members Only** set to *yes*, only members are shown.

Summer Decathlon 2 Mie - 2021-06-09 

Series: decathlon - nonmembers included

Series: Gender: Division:

CSV Search:

Gen Place	Name	Gen	Age	Div	Club	Div Place	Time	Pace	AG Time	AG %age
1	Pete Wergin	M	55				11:41	5:50	9:49	80.65 %
2	Scott Wallace	M	41				10:43	5:21	10:04	78.69 %
3	Arthur Leathers	M	30				10:33	5:16	10:32	75.16 %
4	John Way	M	56				13:53	6:56	11:34	68.45 %
5	Tim O'Keefe	M	68				15:53	7:56	11:53	66.59 %
1	Kathy Cea	F	61				16:14	8:07	11:56	75.73 %
6	Rick Kern	M	55				14:33	7:16	12:13	64.76 %
7	Sean Allen	M	41				14:28	7:14	13:35	58.29 %
8	Ron Elliott	M	45				15:44	7:52	14:19	55.25 %
2	Jeanette Novak	F	77				28:34	14:17	16:00	56.44 %
9	Tim Dodd	M	50				19:28	9:44	17:02	46.45 %
3	Debra Leathers	F	57				22:00	11:00	17:07	52.75 %
10	George LaDue	M	64				23:03	11:31	17:54	44.22 %
4	Val Powell	F	31				19:19	9:40	19:17	46.81 %
5	Julie Harris	F	35				19:37	9:48	19:21	46.64 %

1.2.2.2 Standings view

Navigation: Standings > [set club, year, series]

To see standings for a *series*, click **Standings** on the navigation menu, then set the club, year, and series you're interested in. Then click **Show Standings**.

- click on the → **Races** bar to see all the races
 - once expanded, click on a race to see the *Series Race Results view*
- current overall and division award leaders are emphasized with colors and italics
- place numbering
 - a place number is assigned when participants have run the minimum number of races
 - ties may be resolved by certain comparisons
 - * hover over the place number to see how a tie was resolved
 - * if the tie could not be resolved, the same place number will be in two rows
- hover over the race number column header to see the name of a race
- click on the participant's name to see all the results for a participant

- hover over the club abbreviation to see the official club name

Legend Frederick Steeplechasers Running Club - 2019 grandprix

Gender: all Division:

► Races

Note: If the birth date is known, Div Age is as of Jan 1 of the standings year. If the birth date isn't known, Div Age is estimated based on the earliest race in the year. For series with age-based divisions, Division is based on Div Age.

CSV Search:

Place	Name	Gen	Div Age	n	1	2	3	4	5	6	7	8	9	10	11	12	13	14	15	16	17	18	19	Total Pts.
oa-2	Crystal Brubaker	F	39	5		9			10	10								10		10				49
oa-4	Katharine Warehime	F	36	7	8										10	10	9	9	10			10		49
1	Erica McCann	F	38	5	10	8	10			9			10											47
2	Lindsay Weaver	F	32	5				9	8					10	8						10			45
3	Kristin (Chase) Leahy	F	35	5	9			8							9		7					8		41
4	Megan Hicks	F	31	5							10						3	8				6	10	37
5	Annie Chavent	F	30	4											7	9	8					9		33
	Catherine Scott	F	34	3		7				7														24
6	Zainab Abdullah	F	33	5	7		9									4		4				0		24
	Melissa Wallace	F	37	3									9				6					7		22
7	Meredith Crow	F	39	5					0						6	7			9			0		22
8	Amanda Golden	F	32	4						3						8	5					5		21
	Sarah Heitzler	F	36	3												5	2			8				15
9	Stacy DiFranco	F	39	4				5		0							4	5						14
10	Gwyneth Whieldon	F	35	5			5									2	1			6		0		14
	Karen Ochs	F	35	3	6										5							0		11
	Sana Norton	F	38	1			10																	10

Showing 102 entries

1.2.3 Scoring File Formats

This page gives a reference to all **scoretility** import file formats.

1.2.3.1 Common

File Types

The following file types are allowed.

- csv - comma separated value as specified within [RFC 4180](#), with exceptions that line breaks are not permitted within fields

File Contents

File contents are the file header for the first row, and the member list with a row for each member. The sections defines the permitted column heading names for each file format, and describes the type of data to be found underneath those headings.

Alternate Headings are given, separated by commas. Note the commas are not part of the alternate headings.

Notes:

- required fields are in **bold**
- column order is not specified or implied by the order of fields in this table
- other columns may be present, and are ignored

1.2.3.2 Members File Format

Use this file format when importing members using *Members view*.

Heading	Alternate Headings	Format	Description
FamilyName	Last	Text	The member's last (or family) name.
GivenName	First	Text	The member's first (or given) name.
Gender		F, M, or X	Gender of the participant, as M for male, F for female, or X for non-binary. Case may be upper or lower.
DOB	Date of Birth	yyyy-mm-dd	The member's date of birth: <ul style="list-style-type: none"> • yyyy - 4 digit year • m or mm - 1 or 2 digit month • d or dd - 1 or 2 digit day of the month
RenewalDate ¹	Membership Start Date	yyyy-mm-dd	The date when the member most recently renewed membership for the club. <ul style="list-style-type: none"> • yyyy - 4 digit year • m or mm - 1 or 2 digit month • d or dd - 1 or 2 digit day of the month
ExpirationDate ²	Membership End Date	yyyy-mm-dd	The membership's expiration date. <ul style="list-style-type: none"> • yyyy - 4 digit year • m or mm - 1 or 2 digit month • d or dd - 1 or 2 digit day of the month
City		Text	The member's home city
State		Text	The member's home state (two digit abbreviation)

¹ **RenewalDate** and **ExpirationDate** allow scoretility to determine member's eligibility to participate in a series on a given race date

1.2.3.3 Races File Format

Use this file format when importing races using *Races view*.

Heading	Format	Description
year	yyyy	Calendar year under which race will be tallied
race	Text	Name of race
date	yyyy-mm-dd	Date of race
time1	hh:mm	Time of race, hh is 24 hour format. E.g., 1pm is 13:00
distance	Number	Distance of race (miles)
surface	Text	road, track or trail

1.2.3.4 Results File Format

Use this file format when importing results using *Races view*.

The following file types are allowed.

- text - text files are files which can be viewed in a text editor as columns of data fields
 - columns are defined by the character positions of the heading fields
 - column first character position is the same as the first character position of the heading field
 - column last character position is two characters before the first character position of the next heading field (or at the end of the record for the final column)
 - note this means that the column heading has to be left justified in the column
 - tab characters are permitted – after a tab character the character position is considered to be at the next n*8 character position boundary, where n is an integer
- csv - comma separated value as specified within RFC 4180, with exceptions that line breaks are not permitted within fields
- xlsx - excel file format
- xls - ancient excel file format

Heading	Alternate Headings	Format	Description
place	pl, gunplace, overall place	Number	Overall place of the result within the race. Note 1st place should be first record, 2nd place second, and so on
first-name²	first, first name	Text	Given name of the participant
last-name²	last, last name	Text	Family name of the participant
name²	runner	Text	Full name of the participant, as Firstname Lastname
gender	g, sex, s, male/female	F, M, or X	Gender of the participant, as M for male, F for female, or X for non-binary. Case may be upper or lower
age	ag	Number	Age in integral years of the participant, on the day of the race
city ³		Text	Participant's hometown city, if known
st ³		Text	Participant's hometown state, if known – two character abbreviation for US states or Canadian provinces, or country for other international participants
hometown ³		Text	Participants hometown City, ST, if known
chip-time⁴	time, actual time, nettime	<i>Time Format</i>	Net time from crossing of start mat to crossing of finish mat for chip timed races. See <i>Time Format</i> for acceptable time formats
gun-time[?]	time, actual time	<i>Time Format</i>	Gross time from start of race until finish. See <i>Time Format</i> for acceptable time formats

1.2.3.5 Time Format

Time fields should have the precision as defined in USATF Competition Rules Book rule 165. Format of time must be as follows. Fields within square brackets [] are optional.

[[hh:]mm:]ss[.ddd]

where:

- hh is hours
- mm is minutes
- ss is seconds
- ddd is fractional seconds

² It is permissible to replace **firstname** and **lastname** with **name**

³ It is permissible to replace **city** and **st** with **hometown**

⁴ **chiptime** or **guntime** must be present

SUPER ADMIN MODULE

2.1 Guides

2.1.1 Super Admin Guide

2.1.1.1 Use Cases

Manage Age Grade Tables

Age grade tables are created using the *Age Grade Tables view*, and the age grade factors are imported using the **Import Factors** button on that view.

The age grade factors must be in the format used by <https://github.com/AlanLyttonJones/Age-Grade-Tables>, e.g., <https://github.com/AlanLyttonJones/Age-Grade-Tables/blob/master/2020%20Files/FemaleRoadStd2020.xlsx>.

The track standards in this directory go down to 1500 meters, and are from 2005/2006. Since **scoretility** may need to manage results for shorter races, and the 2015 factors included standards for these shorter distances from 2010, suitable files are created based on the excel file which can be downloaded from <http://www.howardgrubb.co.uk/athletics/wmalookup15.html>.

2.2 Reference

2.2.1 Super Admin Reference

This page gives a reference to all **scoretility** views which are available to *users* who have the *super admin security role*.

2.2.1.1 Age Grade Tables view

Navigation: Super > Age Grade Tables

This view defines what age grade tables are available, and allows import of the age grade factors

Table Name name for age grade table

Last Update (readonly) date/time when the last update was made to this age grade table

In addition to the **New**, **Edit**, **Delete** buttons, there is the following action button.

Import Factors use this to import age grade factors associated with **Gender** and **Type**.

The factors must be in the format as seen in <https://github.com/AlanLyttonJones/Age-Grade-Tables/tree/master/2020%20Files>.

Note: **Gender** and **Type** must be specified when importing a file

Note: While there is a **Clear** button on this form, there is no general use for it. Factors are overwritten when imported.

Show 10 entries Search: 1

Table Name	Last Update
2020 road / 2006 track	2023-01-18 15:11:00

Showing 1 to 1 of 1 entries

Import Age Grade Factors
✕

Table

Gender

Type

File

Drag and drop a file here to upload
No file

2.2.1.2 Clubs view

Navigation: Super > Clubs

Many operations are achieved within a *club*, via the pulldown near the top of each view. This view defines what clubs are available.

Short Name (slug) short name for the club which is displayed on the relevant views

Long Name official name for the club

Location location of the club, in a form suitable for lookup using Google Maps

Service if the club member data can be downloaded, the service must be specified. Currently this must be blank or “runsignup”

Service ID id of club as known by the service

Age Grade Table the age grade table defined on *Age Grade Tables view* to use for age grade calculations

Show entries Search: 1

Short Name (slug)	Long Name	Location	Service	Service ID	Age Grade Table
fsrc	Frederick Steeplechasers Running Club	Frederick, MD	runsignup	668	2020 road / 2006 track
fsrct	FSRC Racing Team	Frederick, MD			2020 road / 2006 track
fsrctest	FSRC Test Club	Frederick, MD	runsignup	668	
mddcgp	Maryland/DC Grand Prix	Davidsonville, MD			
owner	owner				

Showing 1 to 5 of 5 entries

Edit entry

Short Name (slug)	<input type="text" value="fsrc"/>
Long Name	<input type="text" value="Frederick Steeplechasers Running Club"/>
Location	<input type="text" value="Frederick, MD"/>
Service	<input type="text" value="runsignup"/>
Service ID	<input type="text" value="668"/>
Age Grade Table	<input type="text" value="2020 road / 2006 track"/>

2.2.1.3 Service Credentials view

Navigation: Super > Service Credentials

This view defines the credentials used to access services used by **scoretility**

Service Name name of the service

Key key to be used to access the service

Secret secret to be used in conjunction with **Key** to access the service

Show 10 entries [New] [Edit] [Delete] Search: [] Previous 1 Next

Service Name	Key	Secret
athlinks	[REDACTED]	[REDACTED]
googlemaps	[REDACTED]	[REDACTED]
runningahead	[REDACTED]	[REDACTED]
runsignup	[REDACTED]	[REDACTED]
scoretility	[REDACTED]	[REDACTED]
ultrasignup	[REDACTED]	[REDACTED]

Showing 1 to 6 of 6 entries

Edit entry [X]

Service Name: athlinks

Key: [REDACTED]

Secret: [REDACTED]

[Update]

2.2.1.4 Users view

Navigation: Super > Users

This view defines the *users* which can administrate **scoretility**

Name name of the user

Email email address for the user

Password can be used to define the user's email address, but generally should be left blank as the user should define their own password

Owner checkbox for administrators who have **Owner** access

Club used to select the club for which **Admin** and **Viewer** access is being given

Admin check to give read / write access for the indicated **Club**

Viewer check to give read access for the indicated **Club**

Note: when editing a *user*, give **Admin / Viewer** access for each **Club** that the user should be able to access before clicking **Update**

Name	Email	Delete
Claire Heasman		<input type="checkbox"/>
John Way		<input type="checkbox"/>
Kathy Cea		<input type="checkbox"/>
Lou King		<input type="checkbox"/>
Melinda Krummerich		<input type="checkbox"/>
Mike Kearney		<input type="checkbox"/>
Ruth Taylor		<input type="checkbox"/>
Shannon Matthews		<input type="checkbox"/>
test user		<input type="checkbox"/>

Name

Email

Password

Owner

Club

Admin

Viewer

GLOSSARY

club group of runners for which date of birth are known. Usually there are renewal and expiration database for the membership

division age group for a *series*

member a member of a club for which a birth date is known, and there's a defined expiration date. Members are created by importing a membership list

race an event which has *results*

results results of a *race*, including **name**, **gender**, **age**, **time** for each finisher

scoring admin *users* with this *security role* serve in a supervisory position and can create and manage *results*

security role security roles control what views the *user* has access to, what data can be changed in the database, etc.

series a group of *races* which are scored together

super admin *users* with this *security role* have read/write access to all application views

user a *scoretility* administrator

TYPOGRAPHICAL CONVENTIONS

This describes typographical conventions used within the documentation

4.1 Product Reference

The product referenced by the manual is shown in bold, e.g., **scoretility**

4.2 Buttons

Button text is shown in bold, e.g., **Edit**

Specific buttons are described using definitions, e.g.,

This Button what this button does

4.3 Fields

Fields on a view are described using definitions, e.g.,

Field what the field does

Fields are referenced in text by using bold, e.g., **Field**

Values for fields are referenced in text by using italics, e.g., *fieldvalue*

4.4 Filters

Filter labels are referenced in text by using bold, e.g., **Filter Label**

Values for filters are referenced in text by using italics, e.g., *filtervalue*

4.5 Navigation

Navigation is prefixed by **Navigation:** then menu traversal is followed using greater than (>). If some action is required before traversal, that is described within square brackets ([action]), e.g.,

Navigation: Scoring > Races

4.6 Section Management

Should really be following <https://www.sphinx-doc.org/en/master/usage/restructuredtext/basics.html?#sections>, but accidentally ended up with what is below.

Top level section is delineated by ===== above section title and ===== below section title, as can be seen in *Typographical Conventions*.

Next level section is delineated by ===== below section title, as can be seen in Section Management.

Next level is delineated by ----- as can be seen below

4.6.1 Lower Level Section

Next level is delineated by ^^^^^^^^^^^^^^^ as can be seen below

4.6.1.1 Even Lower Level Section

INDICES AND TABLES

- genindex
- modindex
- search

INDEX

C

club, 35

D

division, 35

M

member, 35

R

race, 35

results, 35

S

scoring admin, 35

security role, 35

series, 35

super admin, 35

U

user, 35